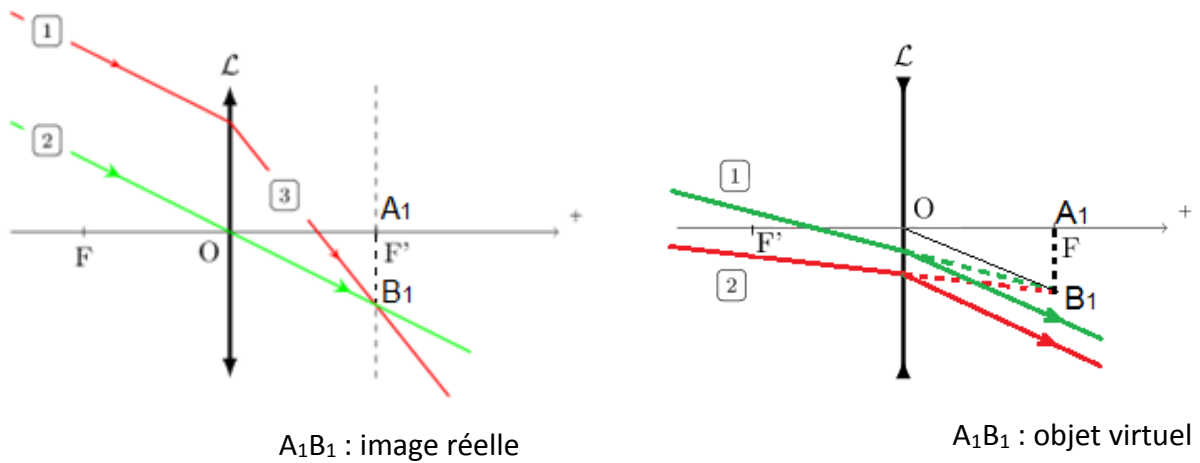
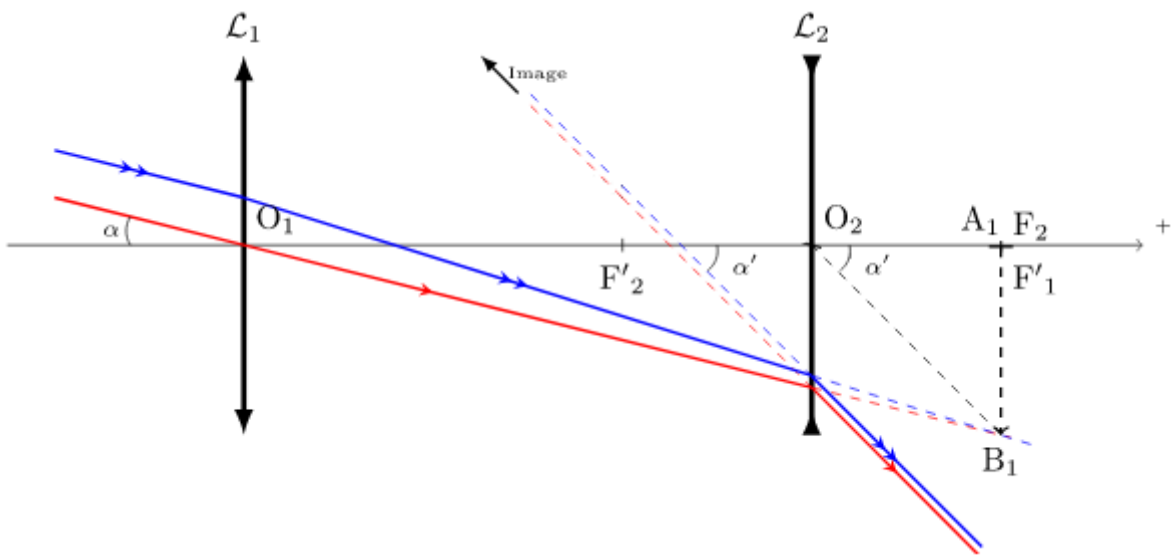


Adapté de <http://www.physagreg.fr/optique-13-lentilles.php>



Adapté de <http://www.physagreg.fr/images/schemas/optique/lunette-galilee.svg>



Construction optique (échelle non respectée)

### Grossissement :

$$\boxed{G = \frac{\alpha'}{\alpha}}$$

$$\tan \alpha' \simeq \alpha' = \frac{\overline{A_1B_1}}{-f'_2}$$

$$\tan \alpha \simeq \alpha = \frac{\overline{A_1B_1}}{f'_1}$$

$$\boxed{G = \frac{f'_1}{-f'_2}}$$

$$G = 1330 / 94 = 14,15$$